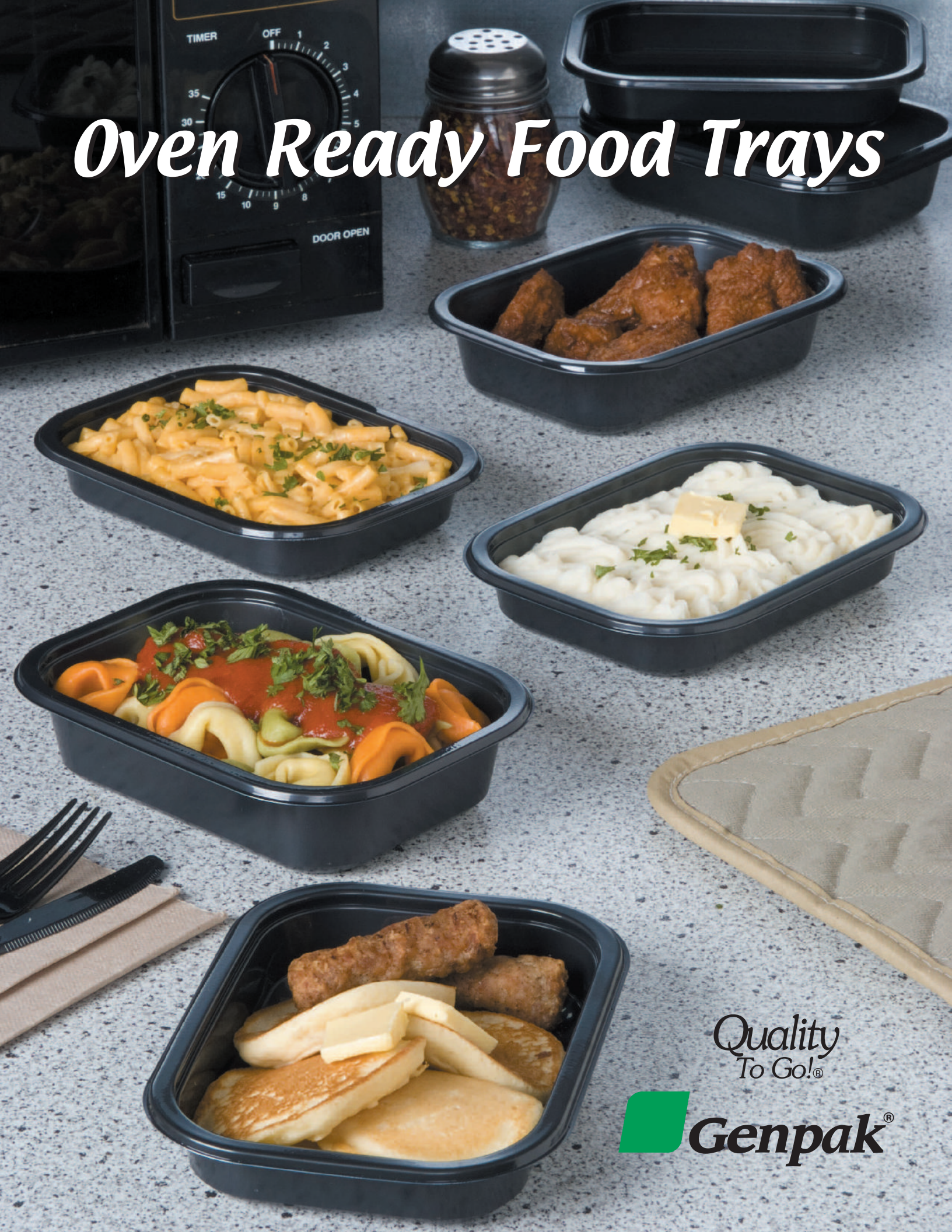


Oven Ready Food Trays




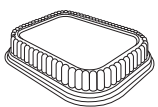

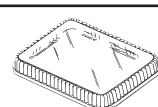


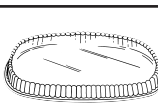


Quality
To Go!®

 **Genpak**®

Genpak Oven Ready Food trays are produced using premium quality PET material that is safe for conventional ovens up to 400° F* or for microwave applications. Both trays will accept a film seal and are perfect for any prepared or frozen meal application.

*** For home oven use always preheat the oven to no more than 400°, use the center rack and always place the tray on an aluminum cookie sheet.**

| Stock Number | Description | Colors Available | Units Per Case | Units Per Sleeve | Pounds Per Case | Cube Per Case | Applications | Price per Case | |
|--------------|--|------------------|----------------|------------------|-----------------|---------------|--|----------------|-----|
| | | | | | | | | TL | LTL |
| 55516 |  16 ounce 1 Compartment Tray 6 ⁵ / ₈ "x 4 ¹⁵ / ₁₆ "x 1 ⁹ / ₁₆ " | Black | 500 | 125 | 14.3 | 1.4 | Dual Ovenable Applications. | | |
| 55516S |  12 ounce Shallow 1 Compartment Tray 6 ⁵ / ₈ "x 4 ¹⁵ / ₁₆ "x 1 ⁵ / ₃₂ " | Black | 500 | 125 | 14.3 | 1.6 | Dual Ovenable Applications. | | |
| 55216 |  2 Compartment Tray 6 ⁵ / ₈ "x 4 ¹⁵ / ₁₆ "x 1 ⁹ / ₁₆ " | Black | 500 | 125 | 14.3 | 1.1 | Dual Ovenable Applications. | | |
| 95516* |  Lid, Fits 55516 55516S & 55216 Height-1 ¹ / ₈ " | Clear | 500 | 125 | 11.0 | 3.3 | Transport and Display. | | |
| 55337 |  3 Compartment Tray 5 ⁷ / ₈ "x 8 ¹ / ₂ "x 1 ¹ / ₂ " | Black | 250 | 125 | 13.5 | .9 | Dual Ovenable Applications. | | |
| 95357* |  Lid-1/2" Fits 55337 | Clear | 250 | 125 | 9.8 | 2.8 | Transport and Display. | | |
| 55026 |  1 Compartment Tray 8 ¹ / ₂ " x 6 ⁵ / ₈ " x 1 ⁵ / ₈ " | Black | 250 | 125 | 20.9 | 1.2 | Meals on Wheels, Institutional Feeding Programs. | | |
| 55027 |  3 Compartment Tray 8 ¹ / ₂ " x 6 ⁵ / ₈ " x 1 ⁵ / ₈ " | Black | 250 | 125 | 20.9 | 1.1 | Meals on Wheels, Institutional Feeding Programs. | | |
| 95026 |  Lid, Fits 55026 & 55027 8 ⁷ / ₈ " x 7 ¹ / ₈ " x 1" | Clear | 250 | 125 | 15.3 | 2.6 | Transport and Display. | | |

*Lid contains up to 40% Post-Consumer Recycled Plastic



PO Box 727 • Glens Falls, New York 12801 • Tel. (518) 798-9511 • Fax (518) 798-2259
Visit: Genpak.com